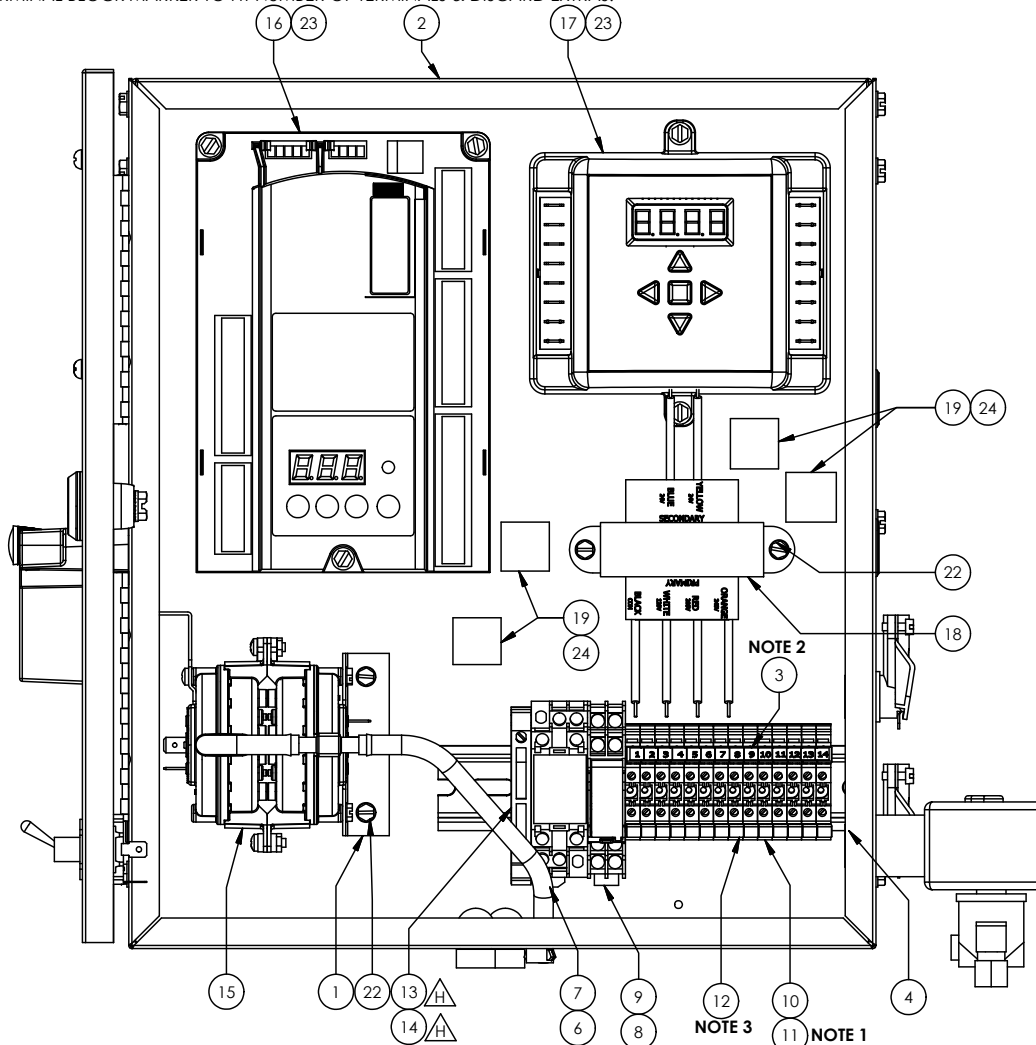


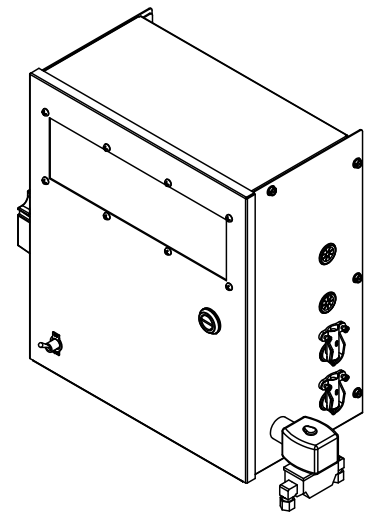
NOTES:

- 1 - USE 8409-26 (TERMINAL BLOCK JUMPER (DIN RAIL)) TO JUMP THE FOLLOWING TERMINALS:
 TERMINALS 2 & 3
 TERMINALS 4 & 5
 TERMINALS 6, 7 & 8
- 2 - CUT 2121-71 LABEL TO ONLY USE TERMINAL NUMBERS 1 THROUGH 14.
- 3 - BREAK 8409-27 TERMINAL BLOCK MARKER TO FIT NUMBER OF TERMINALS & DISCARD EXTRAS.



PARTS LIST				
ITEM	PART NUMBER	DESCRIPTION	QTY	
1	2121-05	AIR SWITCH BRACKET	1	
2	2121-42	CONTROL BOX TOP/BACK	1	
3	2121-71	1-15 TERMINAL LABEL	1	
4	2121-85	7 INCH DIN RAIL	1	
5	* 2133-20	VA - PILOT 120V - SIEMENS WIRE SET	1	
6	8406-95	POWER RELAY (DPDT) 120V PLUG IN	1	
7	8406-96	RELAY SOCKET - DIN RAIL	1	
8	8406-98	POWER RELAY (DPDT) 120V PLUG IN	1	
9	8406-99	RELAY SOCKET - DIN RAIL	1	
10	8409-25	TERMINAL BLOCK - DIN RAIL (2POS)	14	
11	* 8409-26	TERMINAL BLOCK JUMPER (DIN RAIL)	7	
12	8409-27	TERMINAL BLOCK MARKER, BLANK (DIN RAIL)	3	
13	8420-10	DIN RAIL FUSE HOLDER	1	
14	* 8420-11	5-20mm 6.3A SLOW BLOW FUSE	1	
15	8425-56	AIR SWITCH - DUAL NS2 (DNS2)	1	
16	8429-69	BURNER CONTROL (LME71) - PROGRAMMED	1	
17	8429-78	CONTROLLER (RTC-SCEBM-2)	1	
18	8447-28	120/208/240VAC - 24V 40VA TRANSFORMER	1	
19	8480-22	CABLE TIE - MINI (3.9")	4	
20	* 8501-20	FLAME ROD WIRE ASSM - WHITE - 30"	1	
21	* 8501-27	CARBON SPARK WIRE ASSY - 120V - 36"	1	
22	HW1-080	#6-32 x 1/4" SLOTTED PAN HEAD M/S 18-8SS	6	
23	HW1-088	#8-18 X 3/8" SLOT HEX WASH HD SMS TY B ZN	5	
24	HW8-521	.75" NATURAL ADHESIVE CABLE TIE MOUNTS	4	

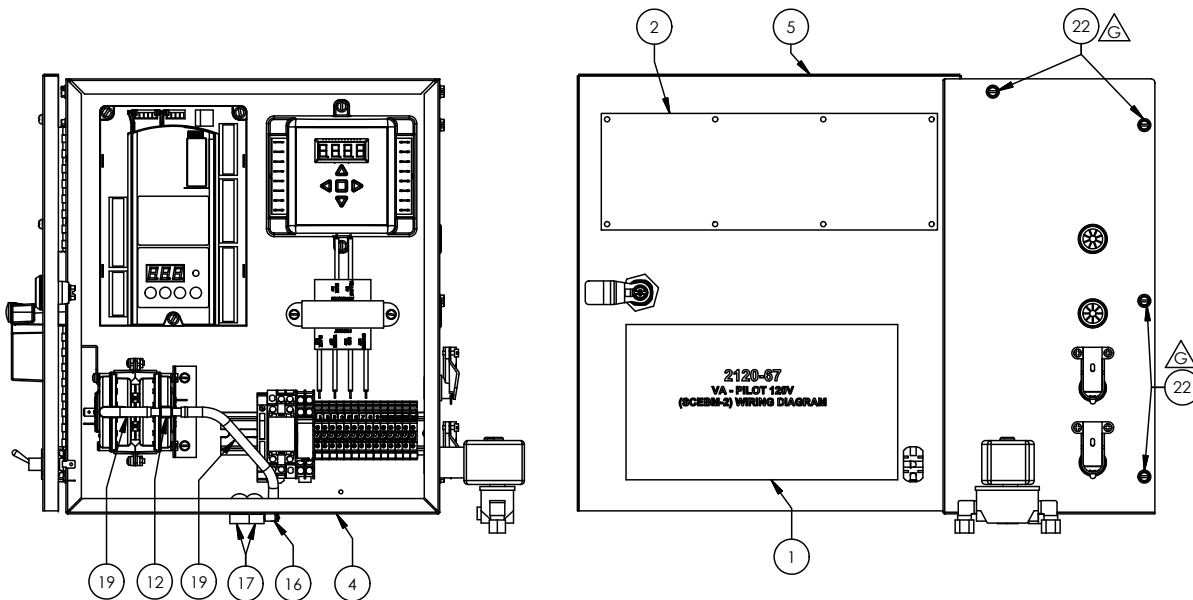
* = ITEM NOT SHOWN ON DRAWING



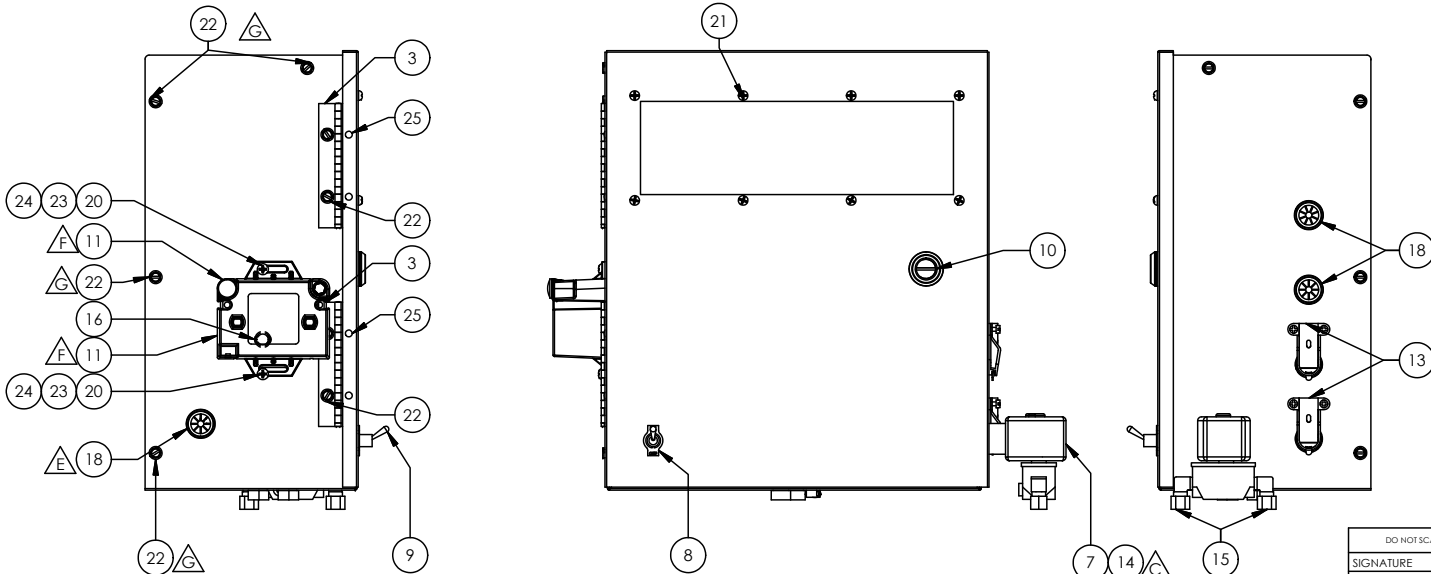
PAGE 1 OF 2

REV	DESCRIPTION	DATE	BY	CHKD	APPROVED	DATE	BY	CHKD	APPROVED
K	UPDATED WIRING	12/9/19	F			8/7/19	ES		
J	ROTATED SPARK GENERATOR	11/27/19	E			5/30/19	ES		
H	ADDED FUSE TO DIN-RAIL (8420-10 & 8420-11)	10/21/19	D			4/19/19	ES		
G	UPDATED HARDWARE	9/16/19	REV				ES		

DO NOT SCALE DRAWING		THIS DRAWING IS PROPERTY OF MIDCO INTL. SENT TO YOU SUBJECT TO RETURN UPON DEMAND, AND WITH THE UNDERSTANDING THAT IT IS NOT TO BE REPRODUCED, COPIED, OR USED DIRECTLY OR INDIRECTLY IN ANY WAY DETRIMENTAL TO OUR INTERESTS.		MIDCO International Inc. CHICAGO, IL	
SIGNATURE	DATE	TOLERANCES UNLESS SPECIFIED		TITLE	
DESIGN	10/31/2018	DECIMALS	FRACTIONS	CONTROL ASSEMBLY - PILOT - 120V - SCEBM-2 - SIEMENS	
DETAIL	10/31/2018	XX ± .000	X/XX ± .015		
APPROVED BY	10/31/2018	XXX ± .005	K/XX ± 1/32		
SCALE : 0,5		ANGULAR ± 1/2°		SIE B	REV NO. K



PARTS LIST				
ITEM	PART NUMBER	DESCRIPTION	QTY	
	1	2120-67	VA - PILOT 120V - (SCEBM-2) WIRING DIAGRAM	1
	2	2121-15	CONTROL BOX WINDOW - VA	1
	3	2121-17	HINGE 1-1/4" - 4" LONG	2
	4	2121-43	CONTROL BOX BOTTOM/SIDES	1
	5	2121-44	CONTROL BOX DOOR	1
	6	2122-61	CROWN STUD & THUMBSCREW - SHRINKWRAPPED	1
F	7	8402-50	1/8" SOLENOID VALVE - 120VAC	1
C	8	8423-04	ON-OFF SWITCH PLATE	1
	9	8423-05	POWER SWITCH	1
	10	8445-26	CAM LOCK LATCH -3	1
F	11	8447-39	IGNITION TRANSFORMER 120V (72 VA)	1
	12	8450-16	TEE TUBE FITTING - 1/4"	1
E	13	8480-09	3/8" BOX 90 EL CONNECTOR	2
	14	8480-13	1/2" CHASE BUSHING NIPPLE	1
B	15	8483-56	1/8M X 1/4T COMP ELBOW	2
	16	8484-71	SNAP BUSHING SB-4375	2
	17	8484-75	STRAIN RELIEF	2
E	18	8484-79	UNIVERSAL BUSHING	3
	19	8675-01	SILICONE RUBBER TUBING - 3/16" ID	1 FT
	20	HW1-022	#10-24 x 3/8" PHILLIPS ROUND HD (18-8SS)	2
	21	HW1-079	#6-32 X 1/4" PHILLIPS PAN HEAD TYPE "F" TCS 410SS	8
G	22	HW1-523	10X32 - 1/4" SLOTTED HEX WASHER HEAD SELF TAPPING SCREW - F ZINC	12
	23	HW2-113	#10-24 HEX NUT (ZINC)	2
	24	HW3-143	#10 SPLIT LOCK WASHER ZINC	2
	25	HW4-175	1/8 X .275 BLIND RIVET ALUM	4



PAGE 2 OF 2

REV	DESCRIPTION	DATE	BY	CHKD	APPROVED
K	UPDATED WIRING	12/9/19	ES	F	
J	ROTATED SPARK GENERATOR	11/27/19	ES	E	
H	ADDED FUSE TO DIN-RAIL (8420-10 & 8420-11)	10/21/19	ES	D	
G	UPDATED HARDWARE	9/16/19	ES	REV	

DO NOT SCALE DRAWING		THIS DRAWING IS PROPERTY OF MIDCO INTL. SENT TO YOU SUBJECT TO RETURN UPON DEMAND, AND WITH THE UNDERSTANDING THAT IT IS NOT TO BE REPRODUCED, COPIED, OR USED DIRECTLY OR INDIRECTLY IN ANY WAY DETRIMENTAL TO OUR INTERESTS.		MIDCO International Inc. CHICAGO, IL	
SIGNATURE	DATE	TITLE		CONTROL ASSEMBLY - PILOT - 120V - SCEBM-2 - SIEMENS	
DESIGN	10/31/2018	UNLESS SPECIFIED			
DETAIL	10/31/2018	DECIMALS	FRACTIONS		
APPROVED BY	10/31/2018	XXX ± .000	XXX ± 01/32		
SCALE : 0.25		ANGULAR	E/12"	SIE	REV. NO. K