

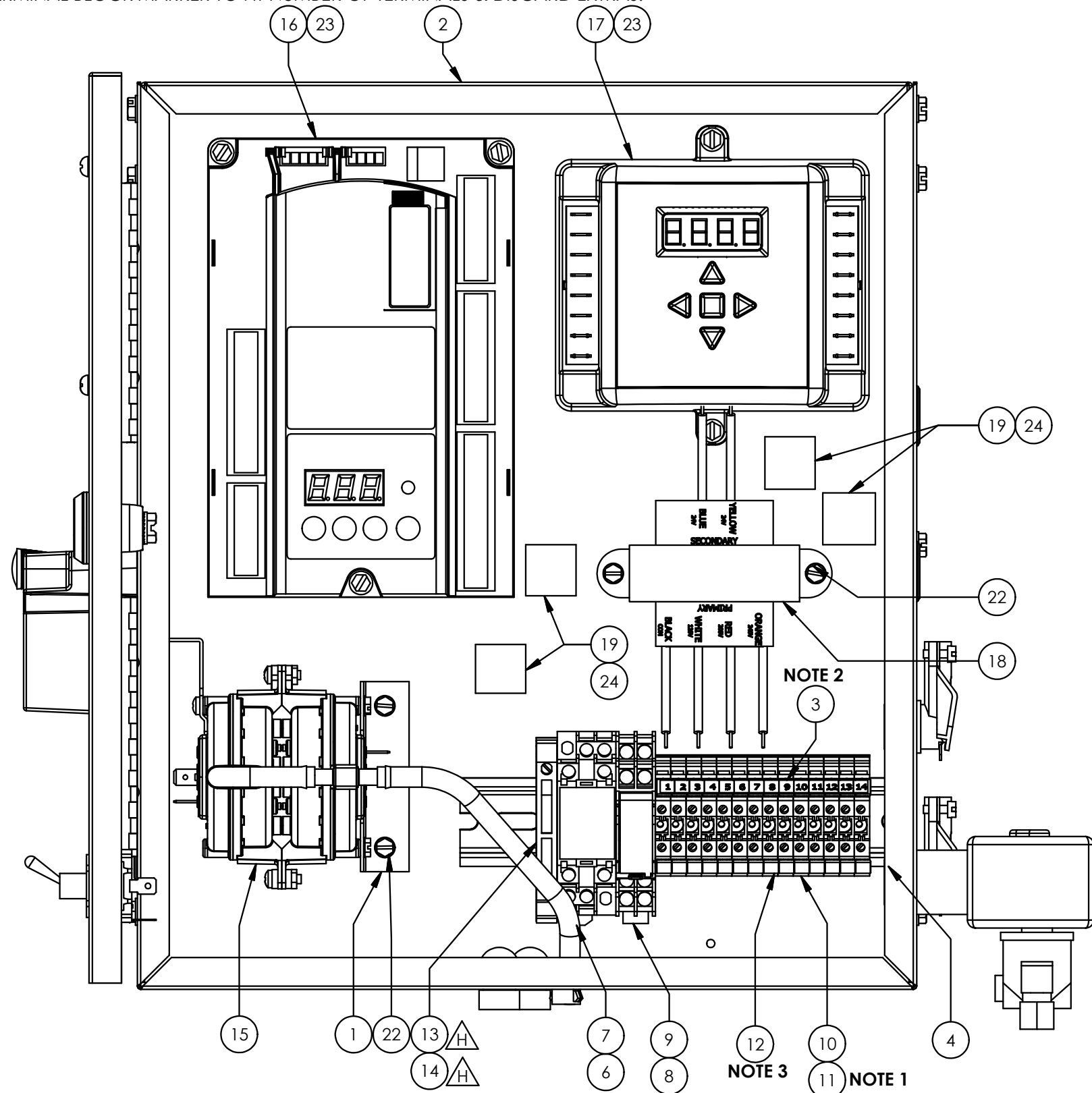
NOTES:

1 - USE 8409-26 (TERMINAL BLOCK JUMPER (DIN RAIL)) TO JUMP THE FOLLOWING TERMINALS:

- TERMINALS 2 & 3
- TERMINALS 4 & 5
- TERMINALS 6, 7 & 8

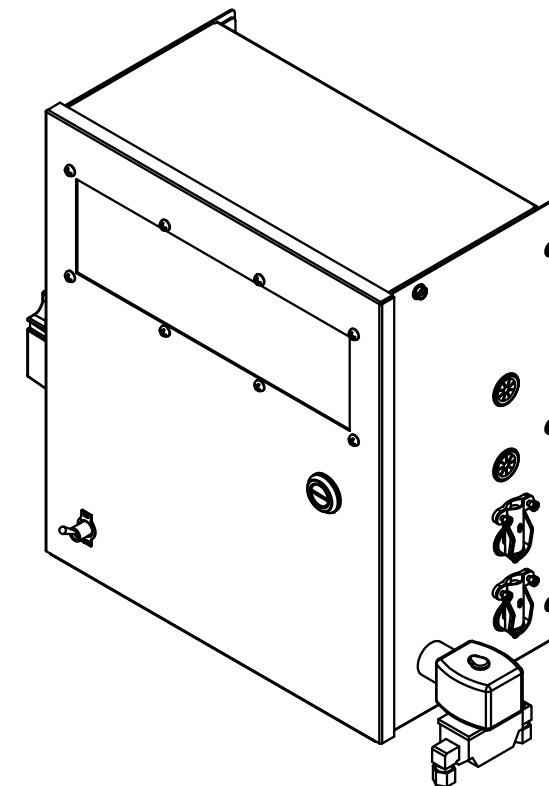
2 - CUT 2121-71 LABEL TO ONLY USE TERMINAL NUMBERS 1 THROUGH 14.

3 - BREAK 8409-27 TERMINAL BLOCK MARKER TO FIT NUMBER OF TERMINALS & DISCARD EXTRAS.



PARTS LIST			
ITEM	PART NUMBER	DESCRIPTION	QTY
1	2121-05	AIR SWITCH BRACKET	1
2	2121-42	CONTROL BOX TOP/BACK	1
3	2121-71	1-15 TERMINAL LABEL	1
4	2121-85	7 INCH DIN RAIL	1
5	* 2133-20	VA - PILOT 120V - SIEMENS WIRE SET	1
6	8406-95	POWER RELAY (DPDT) 120V PLUG IN	1
7	8406-96	RELAY SOCKET - DIN RAIL	1
8	8406-98	POWER RELAY (DPDT) 120V PLUG IN	1
9	8406-99	RELAY SOCKET - DIN RAIL	1
10	8409-25	TERMINAL BLOCK - DIN RAIL (2POS)	14
11	* 8409-26	TERMINAL BLOCK JUMPER (DIN RAIL)	7
12	8409-27	TERMINAL BLOCK MARKER, BLANK (DIN RAIL)	3
13	8420-10	DIN RAIL FUSE HOLDER	1
14	* 8420-11	5-20mm 6.3A SLOW BLOW FUSE	1
15	8425-56	AIR SWITCH - DUAL NS2 (DNS2)	1
16	8429-69	BURNER CONTROL (LME71) - PROGRAMMED	1
17	8429-78	CONTROLLER (RTC-SCEBM-2)	1
18	8447-28	120/208/240VAC - 24V 40VA TRANSFORMER	1
19	8480-22	CABLE TIE - MINI (3.9")	4
20	* 8501-20	FLAME ROD WIRE ASSM - WHITE - 30"	1
21	* 8501-27	CARBON SPARK WIRE ASSY - 120V - 36"	1
22	HW1-080	#6-32 x 1/4" SLOTTED PAN HEAD M/S 18-8SS	6
23	HW1-088	#8-18 X 3/8" SLOT HEX WASH HD SMS TY B ZN	5
24	HW8-521	.75" NATURAL ADHESIVE CABLE TIE MOUNTS	4

* = ITEM NOT SHOWN ON DRAWING



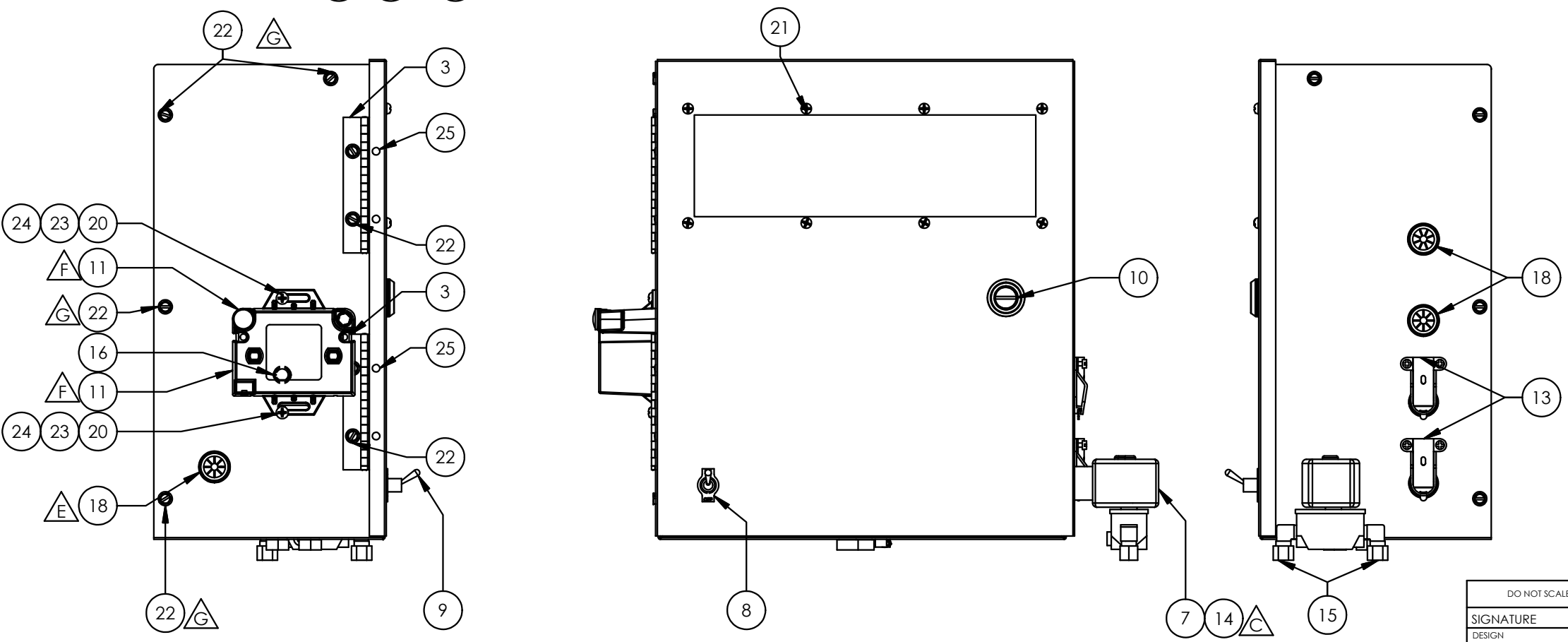
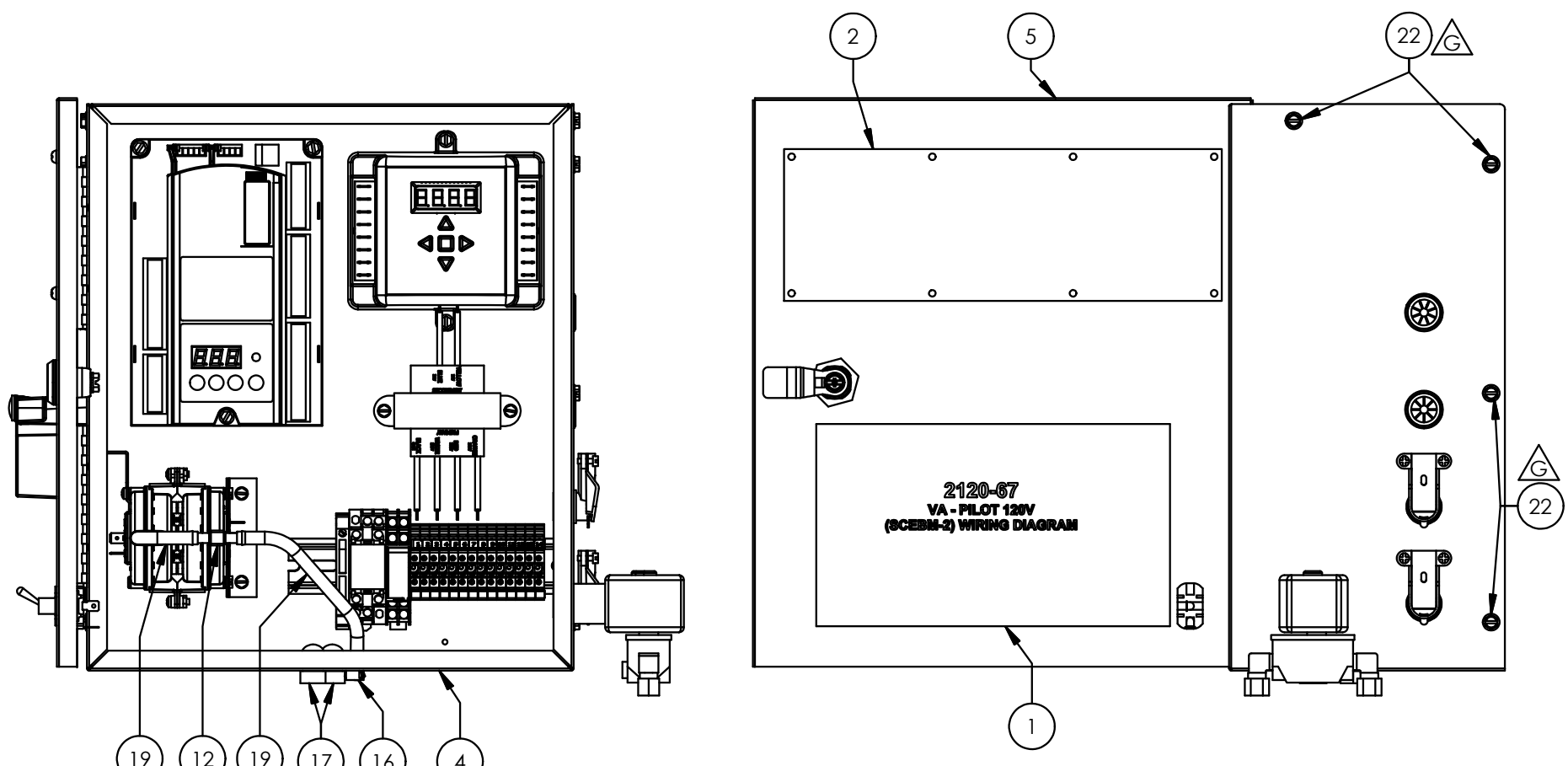
PAGE 1 OF 2

REV	DESCRIPTION	ECN	APPROVED	DATE
K	UPDATED WIRING	8070	ES	12/9/19
J	ROTATED SPARK GENERATOR	8058	ES	11/27/19
H	ADDED FUSE TO DIN-RAIL (8420-10 & 8420-11)	7997	ES	10/21/19
G	UPDATED HARDWARE	7957	ES	9/16/19

SIGNATURE		DATE
DESIGN ES.		10/31/2018
DETAIL AlyssaE		10/31/2018
APPROVED BY ES.		10/31/2018
SCALE : 0.5		

DO NOT SCALE DRAWING			THIS DRAWING IS PROPERTY OF MIDCO INTL SENT TO YOU SUBJECT TO RETURN UPON DEMAND, AND WITH THE UNDERSTANDING THAT IT IS NOT TO BE REPRODUCED, COPIED, OR USED, DIRECTLY OR INDIRECTLY IN ANY WAY DETRIMENTAL TO OUR INTERESTS.		
SIGNATURE			DATE		
DESIGN ES.			10/31/2018		
DETAIL AlyssaE			10/31/2018		
APPROVED BY ES.			10/31/2018		
SCALE : 0.5			TOLERANCES UNLESS SPECIFIED		
			DECIMALS	FRACTIONS	
			XX ± .030	X/X ± 1/32	
			XX ± .015		
			XXX ± .005		
			ANGULAR ± 1/2°		
MIDCO International Inc. CHICAGO, IL		TITLE CONTROL ASSEMBLY - PILOT - 120V - SCEBM-2 - SIEMENS			
SIZE B	DWG NO. 2120-16	REV NO. K			

PARTS LIST				
ITEM	PART NUMBER	DESCRIPTION	QTY	
1	2120-67	VA - PILOT 120V - (SCEBM-2) WIRING DIAGRAM	1	
2	2121-15	CONTROL BOX WINDOW - VA	1	
3	2121-17	HINGE 1-1/4" - 4" LONG	2	
4	2121-43	CONTROL BOX BOTTOM/SIDES	1	
5	2121-44	CONTROL BOX DOOR	1	
6	2122-61	CROWN STUD & THUMBSCREW - SHRINKWRAPPED	1	
7	8402-50	1/8" SOLENOID VALVE - 120VAC	1	
8	8423-04	ON-OFF SWITCH PLATE	1	
9	8423-05	POWER SWITCH	1	
10	8445-26	CAM LOCK LATCH -3	1	
11	8447-39	IGNITION TRANSFORMER 120V (72 VA)	1	
12	8450-16	TEE TUBE FITTING - 1/4"	1	
13	8480-09	3/8" BOX 90 EL CONNECTOR	2	
14	8480-13	1/2" CHASE BUSHING NIPPLE	1	
15	8483-56	1/8M X 1/4T COMP ELBOW	2	
16	8484-71	SNAP BUSHING SB-4375	2	
17	8484-75	STRAIN RELIEF	2	
18	8484-79	UNIVERSAL BUSHING	3	
19	8675-01	SILICONE RUBBER TUBING - 3/16" ID	1 FT	
20	HW1-022	#10-24 x 3/8" PHILLIPS ROUND HD (18-8SS)	2	
21	HW1-079	#6-32 X 1/4" PHILLIPS PAN HEAD TYPE "F" TCS 410SS	8	
22	HW1-523	10X32 - 1/4" SLOTTED HEX WASHER HEAD SELF TAPPING SCREW -F ZINC	12	
23	HW2-113	#10-24 HEX NUT (ZINC)	2	
24	HW3-143	#10 SPLIT LOCK WASHER ZINC	2	
25	HW4-175	1/8 X .275 BLIND RIVET ALUM	4	



PAGE 2 OF 2

REV	DESCRIPTION	DATE	BY	CHKD	APPROVED	ECN	APPROVED	DATE
K	UPDATED WIRING	12/9/19	ES	F	REPLACED 8447-22 WITH 8447-39	7889	ES	8/7/19
J	ROTATED SPARK GENERATOR	11/27/19	ES	E	REPLACED (1) 8480-09 WITH (1) 8484-79	7812	ES	5/30/19
H	ADDED FUSE TO DIN-RAIL (8420-10 & 8420-11)	10/21/19	ES	D	CORRECTED NOTE 3 PART NUMBER	7732	ES	4/19/19
G	UPDATED HARDWARE	9/16/19	ES	REV				

SIGNATURE		DATE	
DESIGN ES.		10/31/2018	
DETAIL AlyssaE		10/31/2018	
APPROVED BY ES.		10/31/2018	
SCALE : 0.25			

DO NOT SCALE DRAWING

THIS DRAWING IS PROPERTY OF MIDCO INTL SENT TO YOU SUBJECT TO RETURN UPON DEMAND, AND WITH THE UNDERSTANDING THAT IT IS NOT TO BE REPRODUCED, COPIED, OR USED, DIRECTLY OR INDIRECTLY IN ANY WAY DETRIMENTAL TO OUR INTERESTS.

TOLERANCES UNLESS SPECIFIED

DECIMALS	FRACTIONS
.XX ± .030	X/X ± 1/32
.XXX ± .015	
.XXXX ± .005	
ANGULAR ± 1/2°	

MIDCO International Inc.
CHICAGO, IL

TITLE
CONTROL ASSEMBLY - PILOT - 120V - SCEBM-2 - SIEMENS

SIZE B DWG NO. **2120-16** REV NO. K